



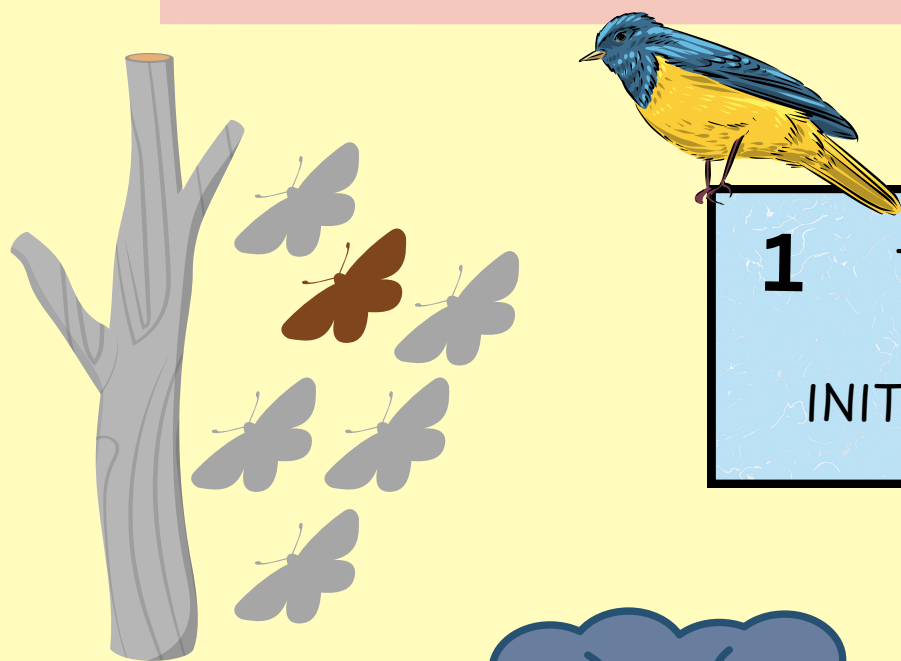
PEPPERED MOTH'S EVOLUTION



INDUSTRIAL MELANISM | CAMOUFLAGE | NATURAL SELECTION



Industrialization had a great effect on the colouration of peppered moths (Biston betularia). They went from being light to dark coloured as more lichen disappeared and tree barks became lichen-less.

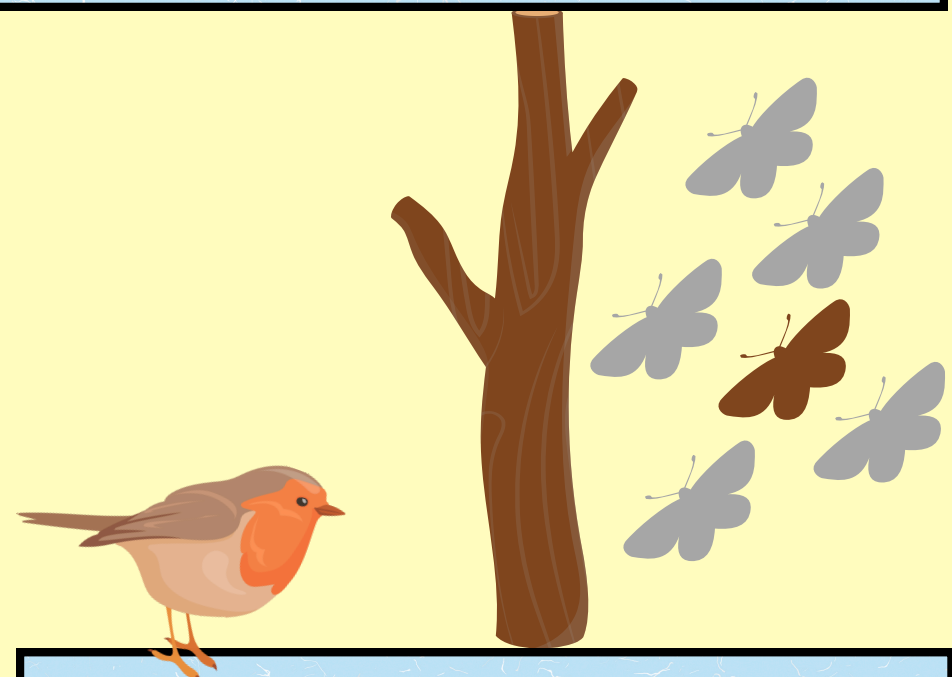


1 THERE IS VARIATION WITHIN THE PEPPERED MOTH POPULATION
INITIALLY, LIGHT MOTHS >> DARK MOTHS

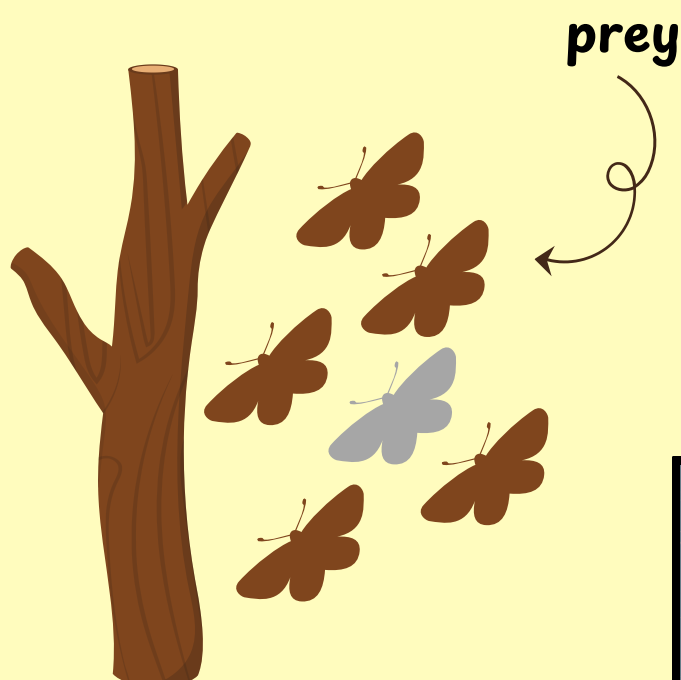


2 POLLUTION LEADS TO THE LOSS OF LICHEN ON THE BARK, THIS BENEFITED DARK MOTHS AS THEY COULD CAMOUFLAGE

3 DARK MOTHS ARE MORE LIKELY TO SURVIVE AND REPRODUCE, PASSING ON THE ALLELES TO THEIR OFFSPRING



4 LIGHT MOTHS ARE NOW MORE LIKELY TO BE EATEN BY BIRDS, AND LESS LIKELY TO REPRODUCE



predator



5 OVER TIME, THERE IS A GRADUAL INCREASE IN THE PROPORTION OF DARK MOTHS. FINALLY, DARK MOTHS >> LIGHT MOTHS