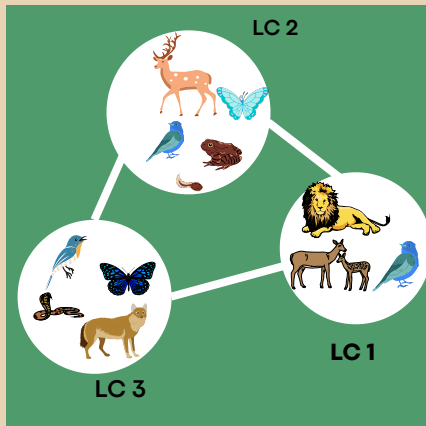
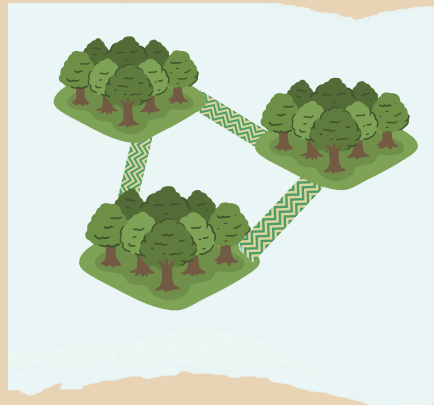


Metacommunity Theory

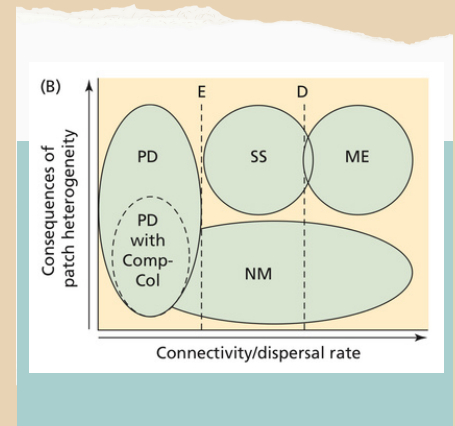
A set of local communities (LC) linked by the dispersal of one or more of their constituent species (Leibold et al. 2004) is called METACOMMUNITY.



METACOMMUNITY

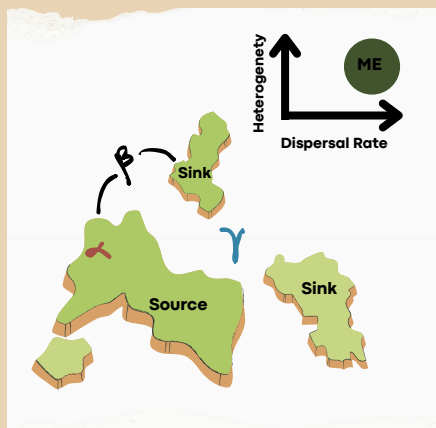


PATCH DYNAMICS (PD)

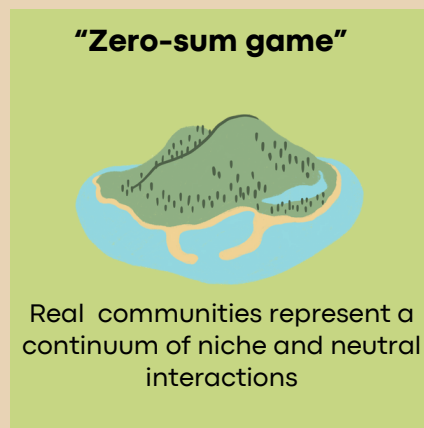


SP. SORTING (SS)

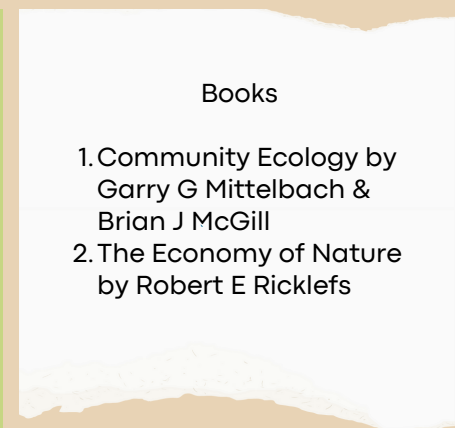
- PD- Multiple species can exist in an environment composed of homogenous habitat patches that includes trade-off like competition.
- SS- Ability to utilise different type of heterogeneous patch. It is the beta diversity of communities.



MASS EFFECT (ME)



NEUTRAL (NM)



References

- ME- It's a source-sink dynamics. It has min beta diversity and max gamma diversity
- NM- Equal probability of colonising open space. Aka null model or ecologically neutral species.