



# WILDLIFE CORRIDORS AND CONNECTIVITY

*CALENDER 2024*

*CONCEPT. ILLUSTRATION,  
SHORT NOTES*



*BY PRIYANKA BORAH*



Wildlife corridors connect isolated forest patches so that wild animals can move freely from one wilderness area to the next

JANUARY						
SUN	MON	TUE	WED	THU	FRI	SAT
	1	2	3	4	5	6
7	8	9	10	11	12	13
14	15	16	17	18	19	20
21	22	23	24	25	26	27
28	29	30	31			

20  
24

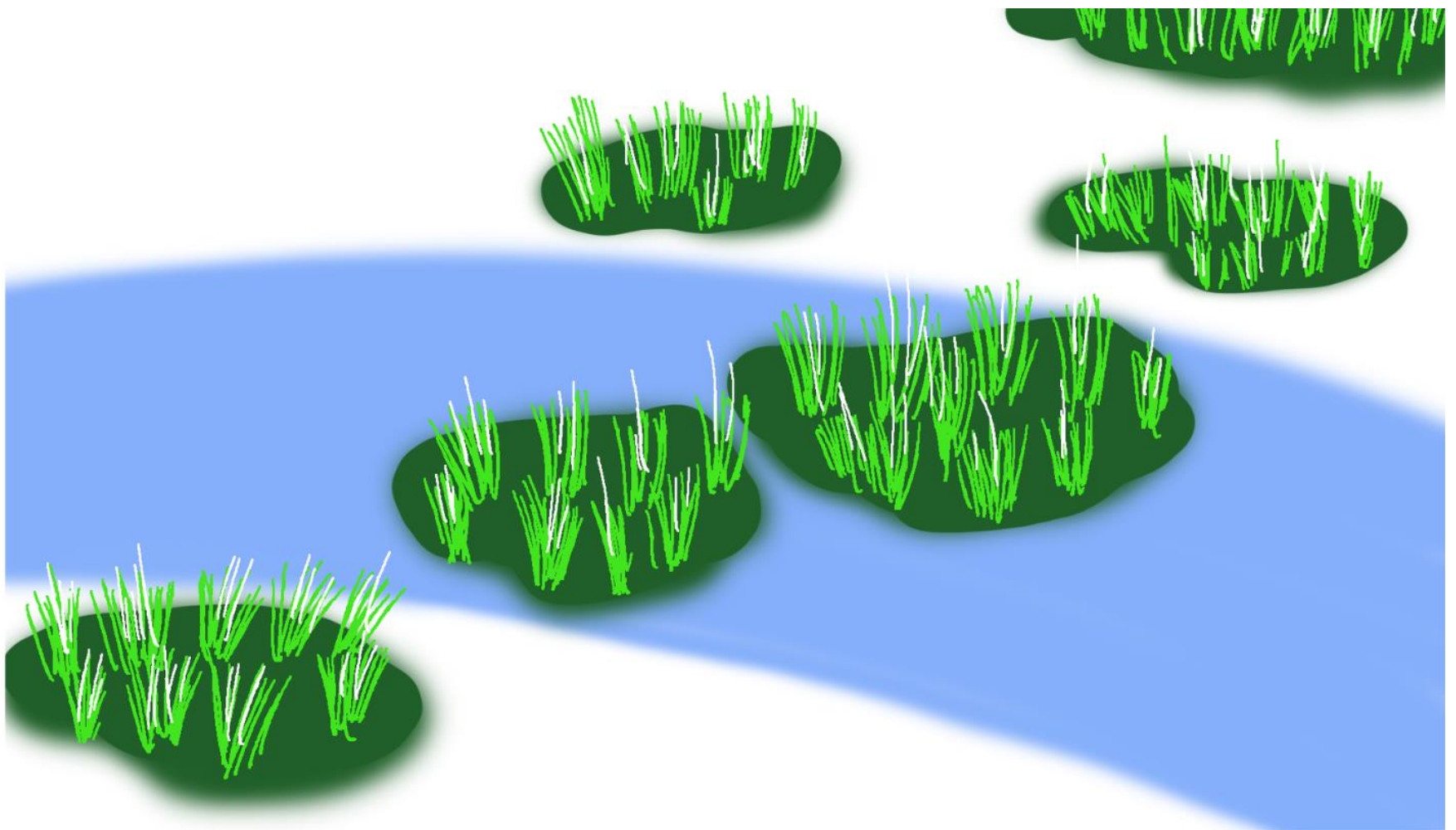




Development projects, roads, human settlements have caused the fragmentation of forests. This hinders the movement of animal freely in the landscape

FEBRUARY						
SUN	MON	TUE	WED	THU	FRI	SAT
				1	2	3
4	5	6	7	8	9	10
11	12	13	14	15	16	17
18	19	20	21	22	23	24
25	26	27	28	29		

20  
24



Natural corridors consists of linear or strip corridors that are continuous patch of vegetation or waterway. Stepping stones are isolated patches of vegetation or single trees or wetlands

MARCH						
SUN	MON	TUE	WED	THU	FRI	SAT
					1	2
3	4	5	6	7	8	9
10	11	12	13	14	15	16
17	18	19	20	21	22	23
24	25	26	27	28	29	30
31						

20  
24

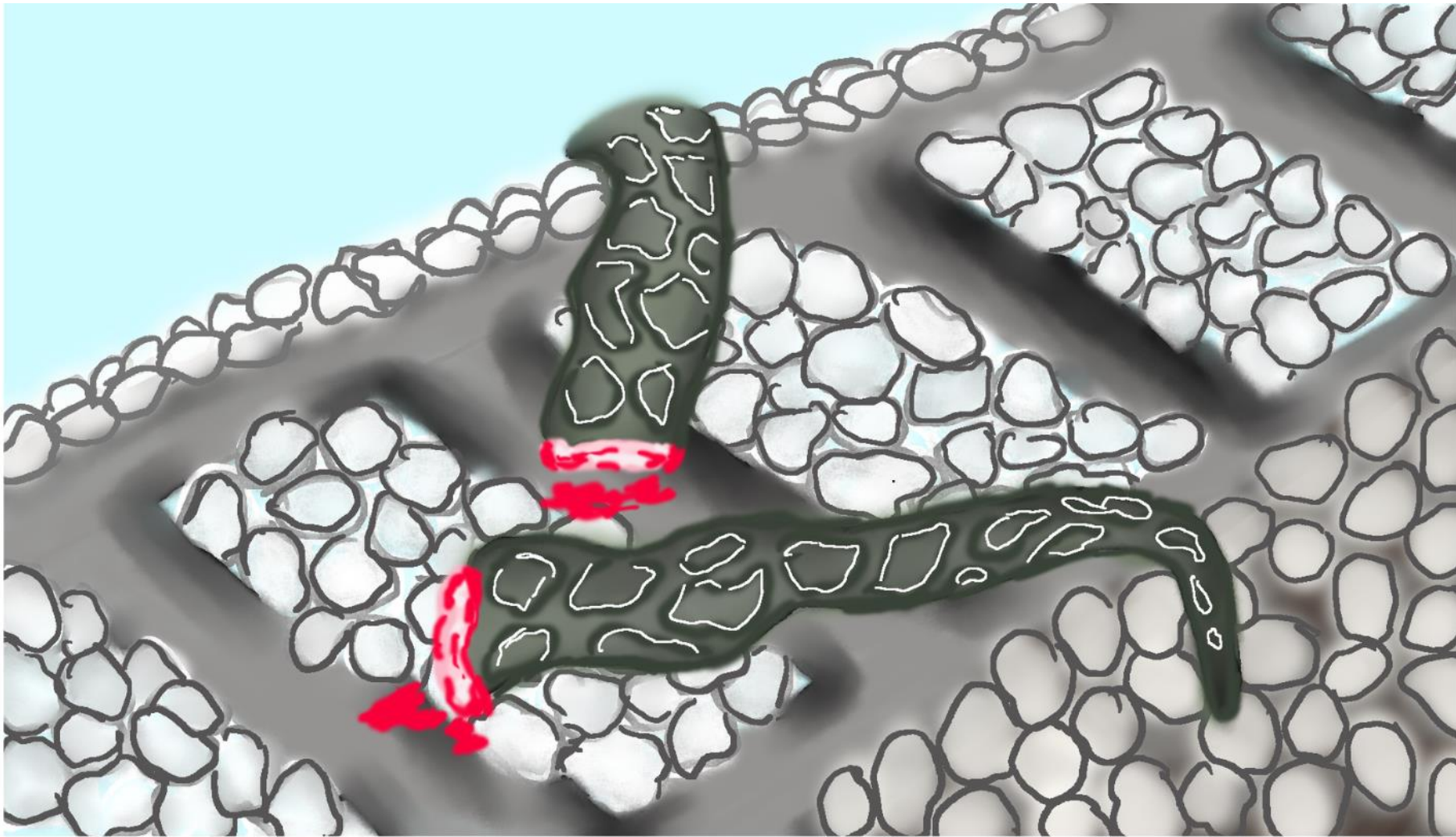




The functionality of corridors vary from species to species. For example, a sub-adult male tiger will use corridor for dispersion, herd elephants use it as a migratory route, and arboreal gibbons use tall trees in corridor as bridge to move to other patches

APRIL						
SUN	MON	TUE	WED	THU	FRI	SAT
	1	2	3	4	5	6
7	8	9	10	11	12	13
14	15	16	17	18	19	20
21	22	23	24	25	26	27
28	29	30				

20  
24

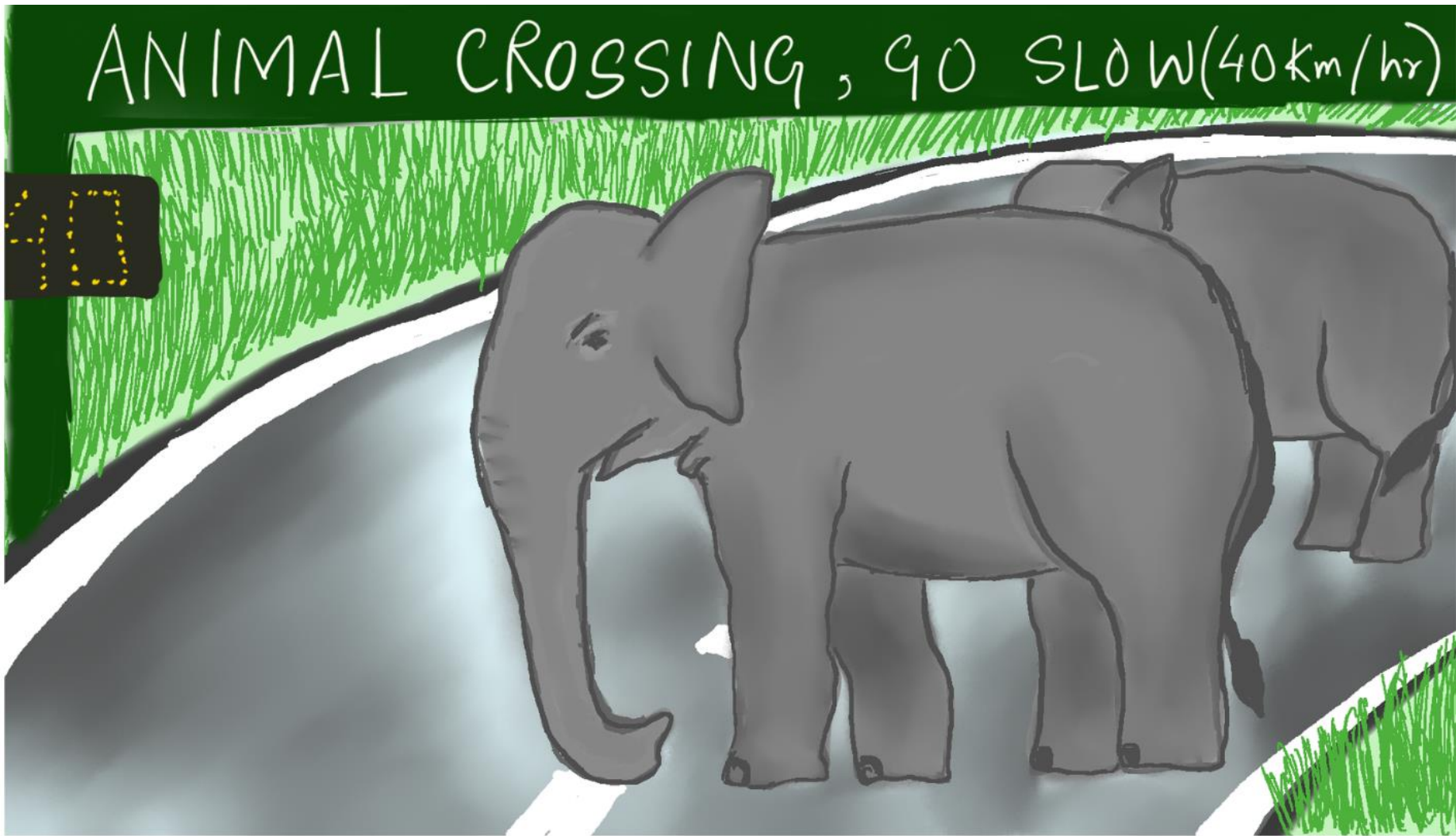


Railway tracks and road constructed in the corridors have resulted into multiple roadkill of wildlife.

MAY						
SUN	MON	TUE	WED	THU	FRI	SAT
				1	2	3
4	5	6	7	8	9	10
11	12	13	14	15	16	17
18	19	20	21	22	23	24
25	26	27	28	29	30	31

20  
24

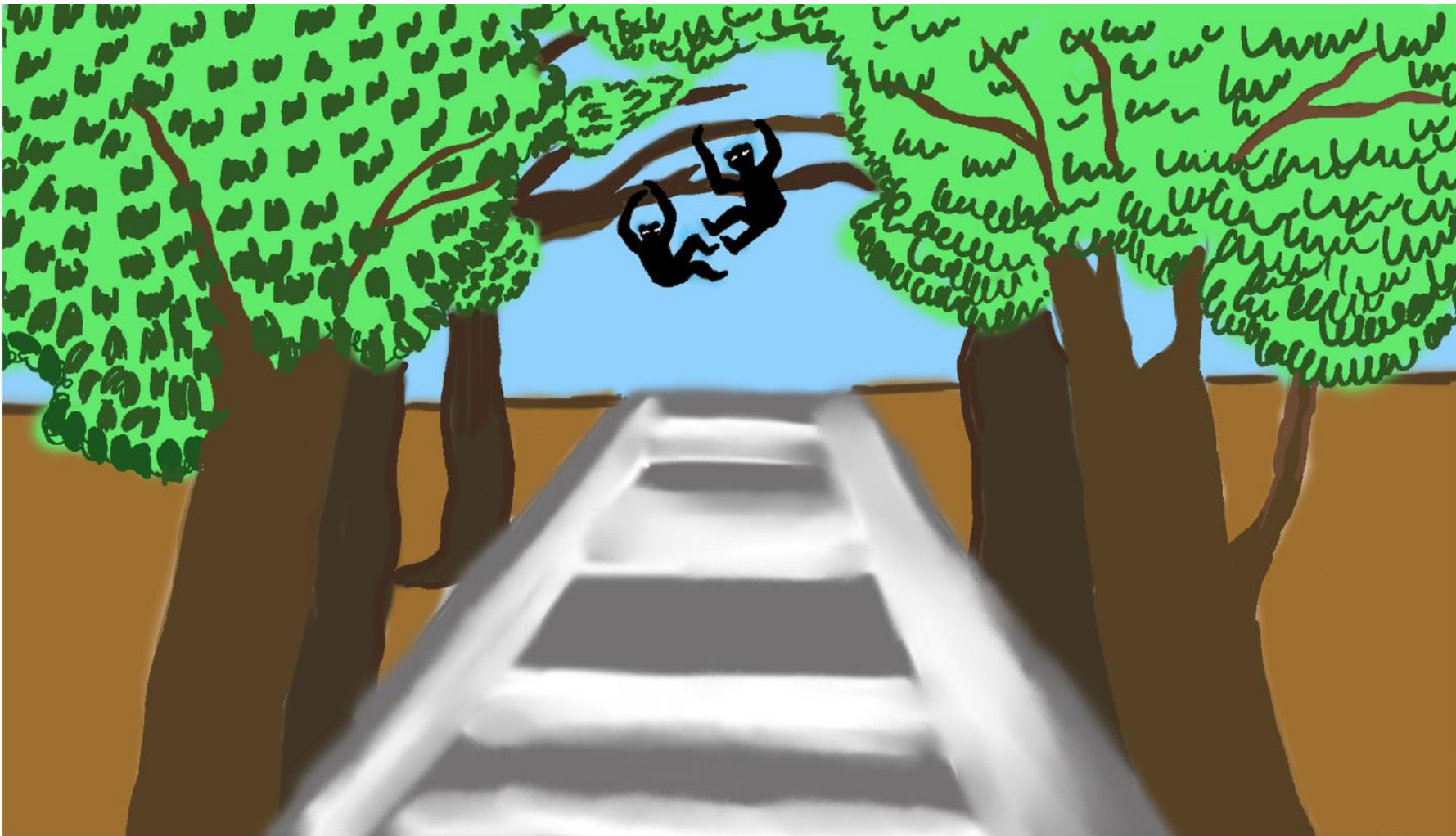




When protected areas are fragmented into patches due to national highways then in order to regulate the speed of vehicles in corridor areas, park authorities fixes a maximum speed limit. A great example is the corridors in the Kaziranga-Karbi Anglong landscape, Assam

JUNE						
SUN	MON	TUE	WED	THU	FRI	SAT
						1
2	3	4	5	6	7	8
9	10	11	12	13	14	15
16	17	18	19	20	21	22
23	24	25	26	27	28	29
30						

20  
24



The Hoolock gibbon, the only ape in India found in the fragmented forest of Hollongapar Gibbon Wildlife Sanctuary, Jorhat, Assam had difficulty in moving from one patch to other due to the presence of the railway line. After successful intervention of conservationist, a canopy bridge was grown over the years from 2006 to help the species thrive.

JULY						
SUN	MON	TUE	WED	THU	FRI	SAT
		1	2	3	4	5
6	7	8	9	10	11	12
13	14	15	16	17	18	19
20	21	22	23	24	25	26
27	28	29	30	31		

20  
24





According to the law of India, wildlife corridors not explicitly defined or protected along the lines of tiger reserves and national parks.

AUGUST						
SUN	MON	TUE	WED	THU	FRI	SAT
				1	2	3
4	5	6	7	8	9	10
11	12	13	14	15	16	17
18	19	20	21	22	23	24
25	26	27	28	29	30	31

20  
24



A 90 feet long eco bridge was constructed in Nainital, Uttarakhand for animals to move across the patches without colliding with vehicles specially reptiles and small mammals

SEPTEMBER						
SUN	MON	TUE	WED	THU	FRI	SAT
	1	2	3	4	5	6
7	8	9	10	11	12	13
14	15	16	17	18	19	20
21	22	23	24	25	26	27
28	29	30				

20  
24

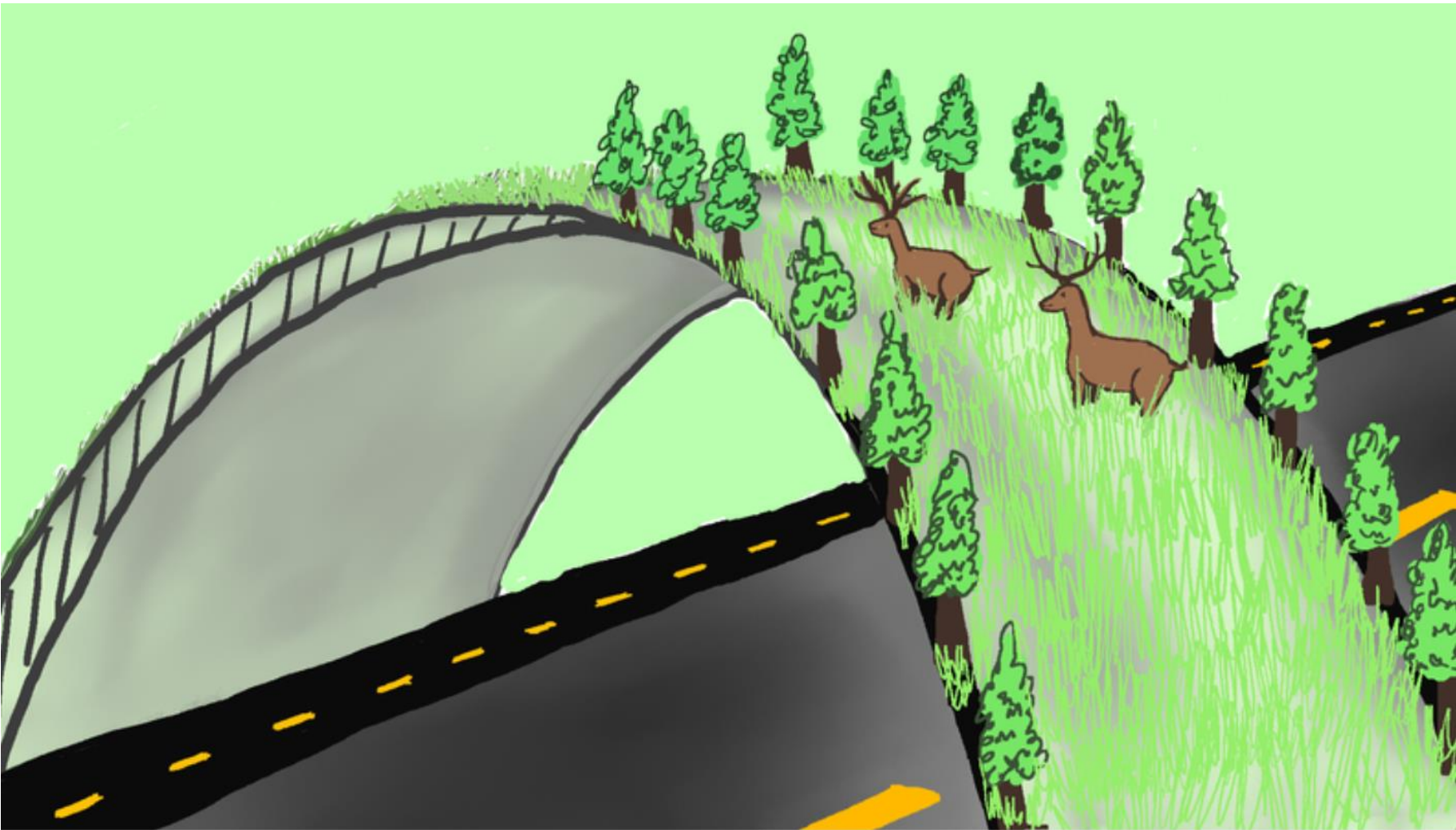




The Balasaheb Thackeray expressway between Mumbai and Nagpur has constructed 17 underpass corridors for movement of wildlife

OCTOBER						
SUN	MON	TUE	WED	THU	FRI	SAT
		1	2	3	4	5
6	7	8	9	10	11	12
13	14	15	16	17	18	19
20	21	22	23	24	25	26
27	28	29	30	31		

20  
24



Nine green bridges is also constructed under the same highway for movement of wildlife. Leopard -proof fences are also constructed to prevent animal from jumping

NOVEMBER						
SUN	MON	TUE	WED	THU	FRI	SAT
					1	2
3	4	5	6	7	8	9
10	11	12	13	14	15	16
17	18	19	20	21	22	23
24	25	26	27	28	29	30

20  
24



# THIS YEAR LET'S CONNECT THE DOTS.

Many government bodies and civil society organization are working for corridor management in India trying to restore corridors or connect fragmented patches through artificial corridors

DECEMBER						
SUN	MON	TUE	WED	THU	FRI	SAT
	1	2	3	4	5	6
7	8	9	10	11	12	13
14	15	16	17	18	19	20
21	22	23	24	25	26	27
28	29	30	31			

20  
24